



# Portfolio

Matteo Mugnai

**Matteo Mugnai** is an Italian designer based in **London**, with over a decade of expertise in **furniture and interior design**. Graduating from **Politecnico di Milano** with a degree in Industrial Product Design, Matteo honed his skills working with diverse materials and technologies, including **wood, metal, plastic, and 3D printing**. His design journey began at the age of 12 and continued at the **Art Institute of Florence**, where he studied various arts and developed a deep passion for craftsmanship.

Growing up in **Florence**, surrounded by rich artistic heritage, profoundly influenced Matteo's creative path. Inspired by **Renaissance masters** like Leonardo da Vinci, he constantly seeks to explore new territories and perfect his craft.

Matteo's professional career began in Milan, where he transitioned from graphic design to furniture design at **Paola Navone**, contributing to projects for renowned companies like **Baxter, Gervasoni, and Crate and Barrel**, including specific design furniture for hotels like Hotels Como Resort: **Point Yamu - Thailandia, and Traymore - Miami**. This experience taught him the value of blending handcrafted and playful aesthetics with mass production, a philosophy that continued at **Slide Design**, where he played a key role in developing sustainable and accessible products made mainly in rotational and injection moulding.

His career then pivoted to **fashion retail**, where he managed large-scale projects for brands like **Hugo Boss** and **Timberland**, overseeing client and supplier relationships, enhancing his project management skills, and designing furniture for store layouts while creating complex spreadsheets for production. Seeking new challenges, Matteo moved to London, working as a product designer at **Maxim World** designing **bespoke products for hospitality and F&B**, and later as a furniture & interior designer at **Lema UK**, where he focused on **bespoke furniture design** for clients, furniture sales, and bespoke design projects for both residential and contract divisions.

After nearly three years at **Lema UK**, Matteo embraced a **freelance career**, continuing to pursue his passion for innovative design. He provides **custom design services** that blend classic Italian style with modern British needs, focusing on sustainability, social design, and AI art, ensuring every project is both beautiful and environmentally responsible.

Matteo believes that **good design has the power to enhance lives and should be accessible to all**. His Designer models are both **Enzo Mari and Droog Design**, although completely different from each other. Staying informed about the **latest technologies and design trends**, he ensures that his work positively impacts both people and the environment.



# INDEX

0.1

**MM**  
MATTEO MUGNAI



MM-Matteo Mugnai - Furniture and Product Design projects

0.2

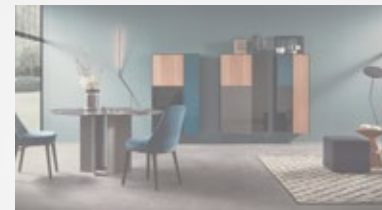
BAUDOIN & LANGE  
LONDON



MM - Matteo Mugnai - Bespoke Furniture & Interior design store

0.3

**LEMA**  
EVERYDAY ITALIAN DESIGN



Lema - Furniture Designer, Interiors, furniture and sale

0.4

**MW**



Maxim World - Product Designer Bespoke products for Hotel & Restaurants

0.5

**OFPTIERA**



Ofp - Project Manager / Designer Window display production

0.6

**SLIDE**



Slide - Product Designer Rotational moulding furniture

0.7

**PAOLA NAVONE**



Paola Navone - Furniture Designer Furniture research & development, Interiors

0.8

Freelancer



Prototypes - 3d printing

0.9

Ai



AI images created with Midjourney and Stable Diffusion.

**MM**

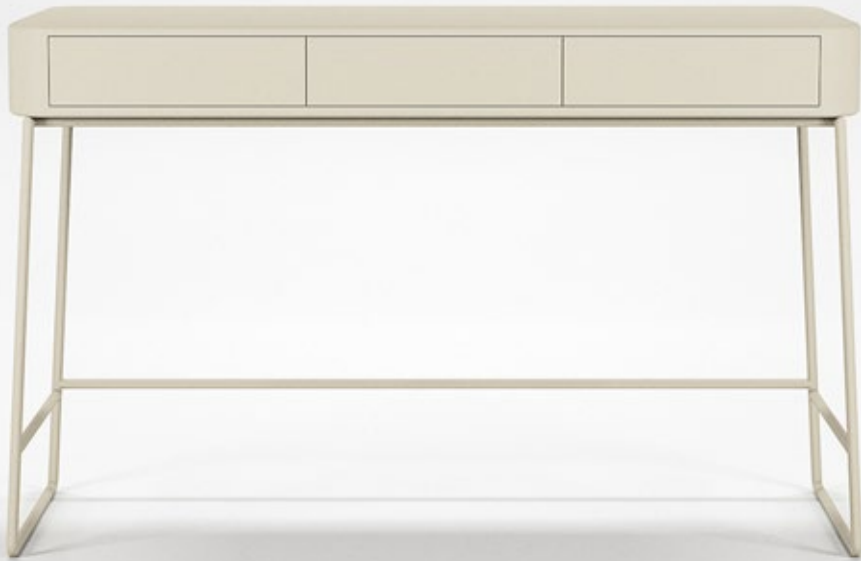


NEXTING TABLE is a collection of side tables. Simple aesthetics exalts craftsmanship and intrinsic quality of materials. In addition to useful top, each side table has a storage compartment, where everyday objects can be located. The top that closes it, becomes a tray to service of sofa and / or bed.

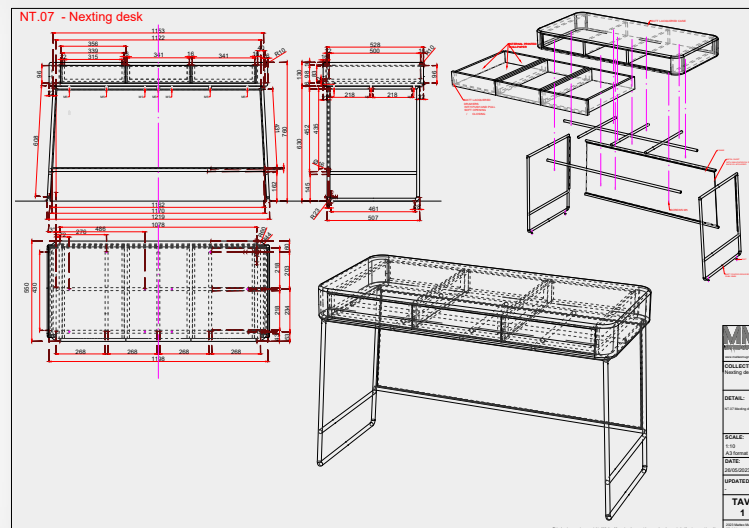
[www.internimagazine.it/news/agenda/design-homi-milanofalldesignweek/](http://www.internimagazine.it/news/agenda/design-homi-milanofalldesignweek/)  
[www.dentrocasa.it/nexting-tables-valigie-del-quotidiano/](http://www.dentrocasa.it/nexting-tables-valigie-del-quotidiano/)







Inspired by the clean lines of the 1950s but designed for today, the NEXTING desk is an addition to the Nexting collection, blending simple style with quality craftsmanship. The desk has three drawers with a push-and-pull mechanism, lined with an internal decorative custom wallpaper. Plus, the back is customisable with your choice of wallpaper, offering a smart way to keep cables out of sight. Overall dimensions: w 1200 x d 550 x h 760mm



# POUFABLE POUF AND COFFEE TABLE

0.1

## POUFABLE POUF AND COFFEE TABLE

DESIGNER MATTEO MUGNAI



Poufable is a distinctive piece of furniture that combines the usability of a coffee table with the cosiness of a softly padded pouf. It is a wonderful addition to a modern or contemporary décor because of its flower shape, which lends a sense of elegance to any living area.

While the centre hard top of Poufable offers a secure place for setting drinks, nibbles, or other items, the soft padded upholstery, available in multiple choice of fabrics, leather or COM, is ideal for relaxing or lounging.

### DIMENSIONS

PT.01



### DETAILS\*

Top and legs in metal ( either bronzed or white finish), upholstery cover in different range of fabric, velvet, eco leather or leather. Piping available in few different colours and finishes. You can choose your own fabric / leather (COM option).

#### UPHOLSTERY COVER

Fabric

Velvet

Eco leather

Leather

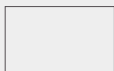
#### PIPING

Available in few fabrics and eco leather / leather options

#### METAL LEGS AND TOP

Bronzed metal

White painted metal



# URBINO SOFA

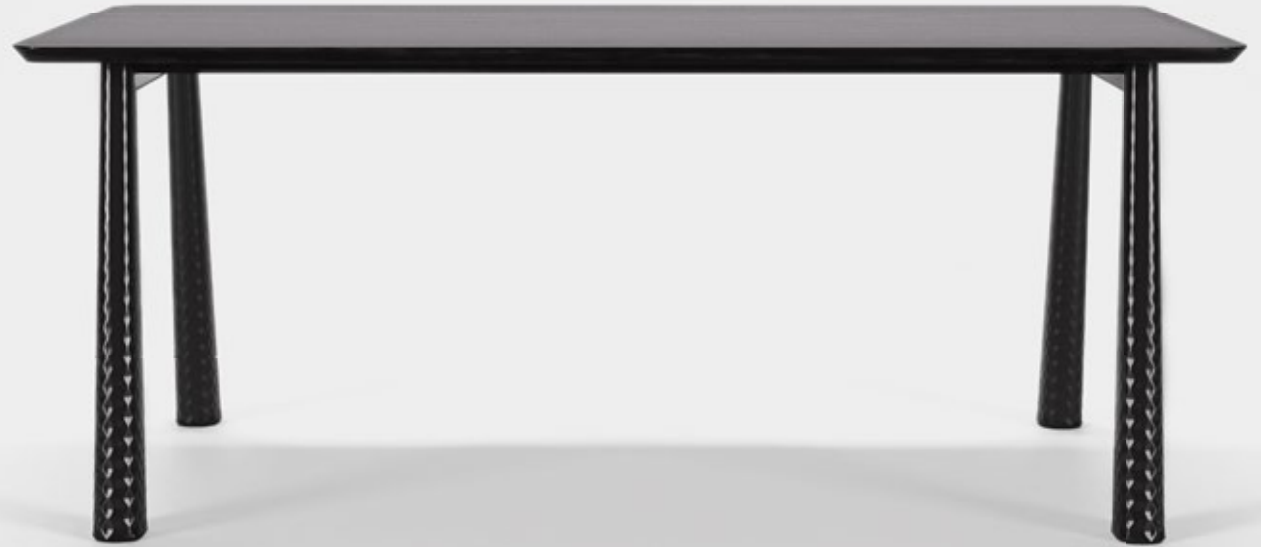
0.1



Urbino sofa is inspired by urban and industrial design. It sits on a dark oak base that adds a touch of rustic charm. It's possible to shift the backrest, turning part of the sofa into a space you can use like a coffee table. Modelled in Rhino. Rendered in Keyshot.







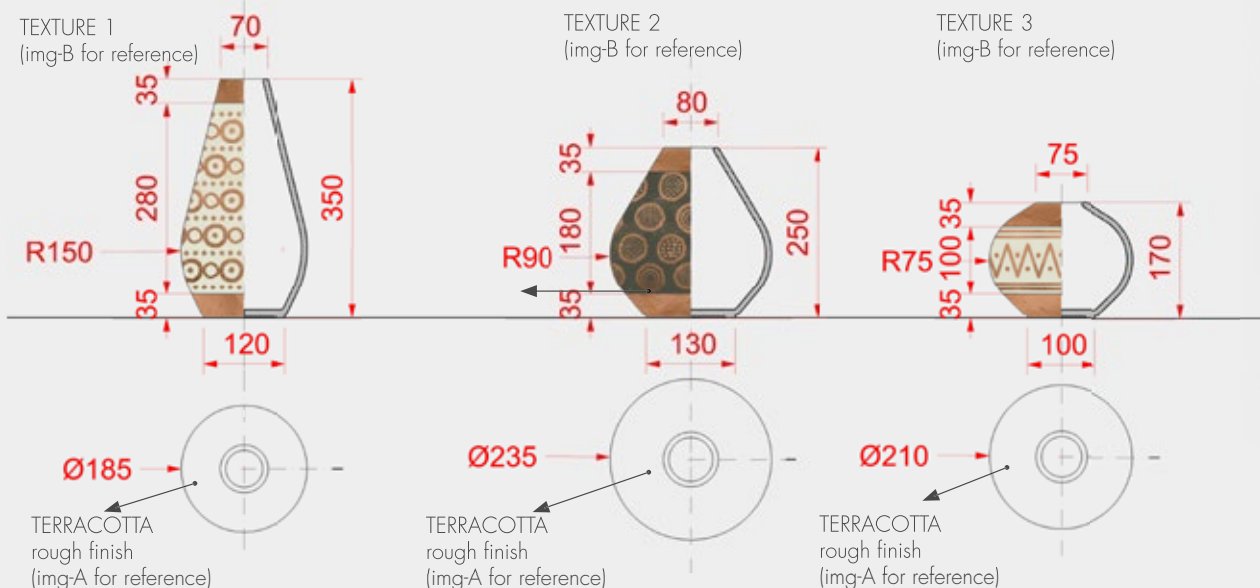
"Wabi" is a dining table where Japanese minimalism meets the raw beauty of Wabi-Sabi. Each table leg, hand-chiseled, reveals an organic transition from rugged textures to sleek smoothness, exemplifying the elegance of imperfection. Crafted from natural wood, its clean lines and unadorned surfaces are a celebration of authenticity. "Wabi" represents a narrative of harmony and balance, an art piece that evokes serenity and embodies the appreciation of imperfection inherent in Wabi-Sabi.





# PRIMITIVE VASES

0.1



IMG - A



IMG - B  
Please don't paint the terracotta to create the design



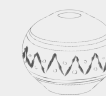
The 'Primitive' collection comprises terracotta vases inspired by the colours and shapes of magical Africa. These vases embrace the essential textures inherent in terracotta, deriving their beauty from its natural colour. Characterised by primitive signs and rugged surfaces, imperfection is transformed into tribal elegance.



TEXTURE 1  
1.1\_VASE 185 x h350

TEXTURE 2  
1.2\_VASE 235 x h250

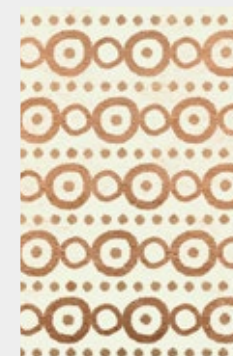
TEXTURE 3  
1.3\_VASE 210 x h170



PANTONE WARM GRAY 1M  
/ TERRACOTTA

PANTONE 418  
/ TERRACOTTA

PANTONE WARM GRAY 1M  
/ TERRACOTTA



## PLAN LAYOUT - MOODBOARD

**Library**  
- Rounded detail  
- Lower cabinet + shelving on top



**Window display**  
- Rounded shapes  
- Cable outlet for power point  
- Led lighting  
- 2x spotlights placement



**Floating flat Shelving**  
- coinoleid brackets  
- rounded shape



**Floating slanted Shelving**  
- coinoleid brackets  
- rounded shape



**Mirror**  
- rectangular with oak profile



## PHASE A

**Accessory display with moulding and grid shelving design**



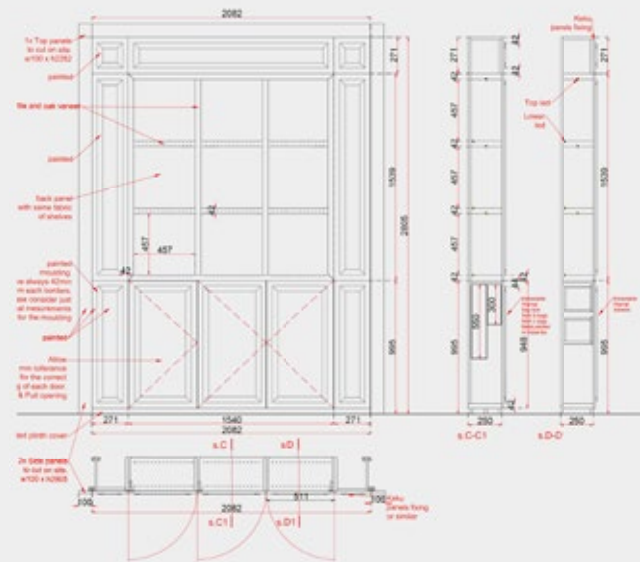
**Wicks Fine Double Astragal Moulding**  
- 21 x 8 x 2400mm



This page is an initial design. Do not take in consideration for production

MM  
MATTEO MUGNAI

## ACCESSORIES UNIT (1/2)



Drawing code: 28REX\_DD-08

## PHASE B

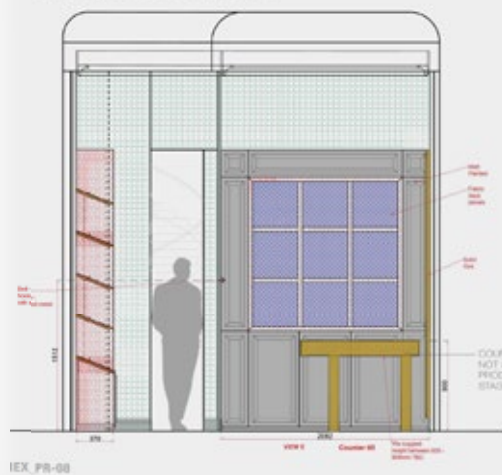


MM  
MATTEO MUGNAI

Collaborating closely with my client Baudoin & Lange, I had the pleasure of designing and developing their new store located at the Royal Exchange in London. The creative journey spanned three months, culminating in the final realisation and installation. The primary concept was to harmonise classic design elements, such as traditional moulding, with organic shapes and a modern, clean approach. On this page, you will find some elevations, technical drawings, and mood boards.

[baudoinlange.com](http://baudoinlange.com)

## 08\_APPROVED ELEVATION E



## PHASE B



MM  
MATTEO MUGNAI



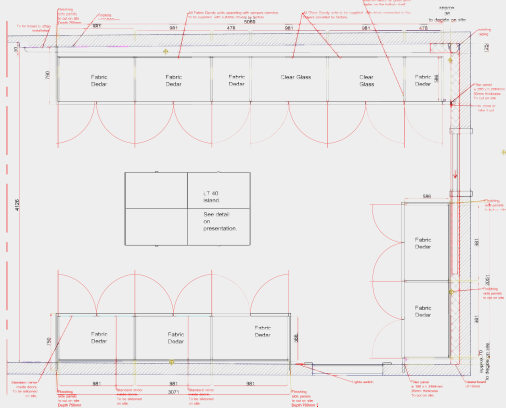




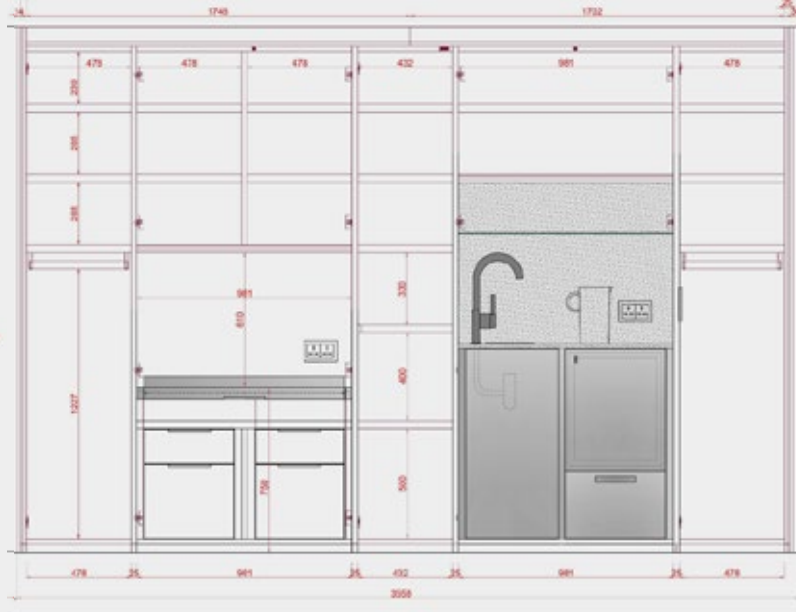
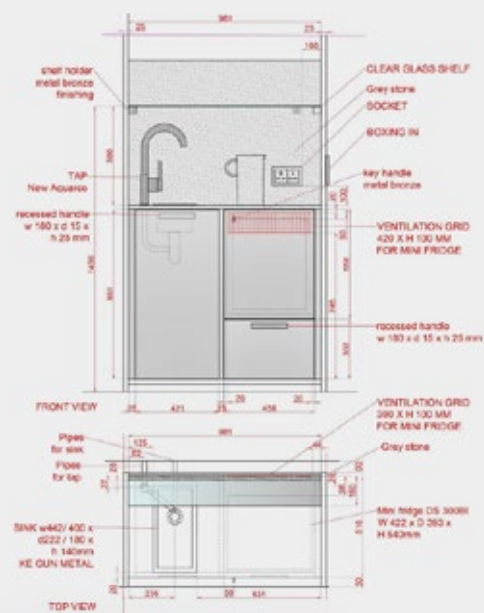
Some photos taken after  
the installation in the store.

[baudoinlange.com](http://baudoinlange.com)



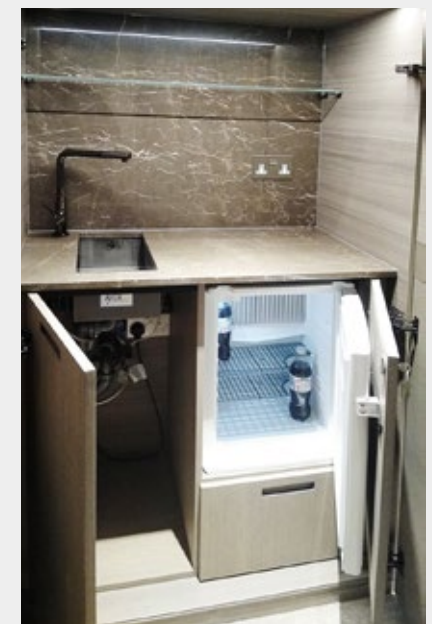






Example of bespoke design:  
For a master bedroom, I've designed a kitchenette and pull-out desk inside a wardrobe. On the right, another example of a mini-fridge inside a wardrobe, along with a pull-out desk with a drawer, above which two pocket doors conceal a monitor.

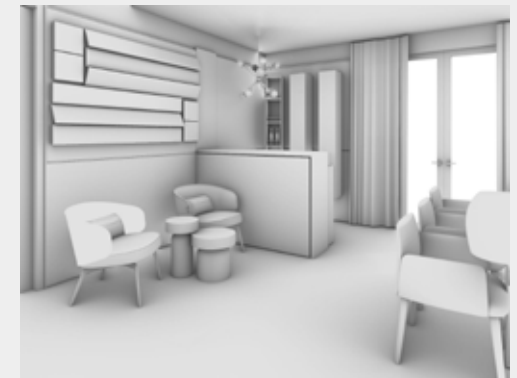
[www.lemamobili.com](http://www.lemamobili.com)





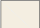



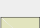
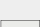
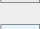
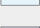
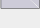

Interior Design service, offering two options for the dining room with a bespoke bar featuring LED lights and a small lounge area.

[www.lemamobili.com](http://www.lemamobili.com)



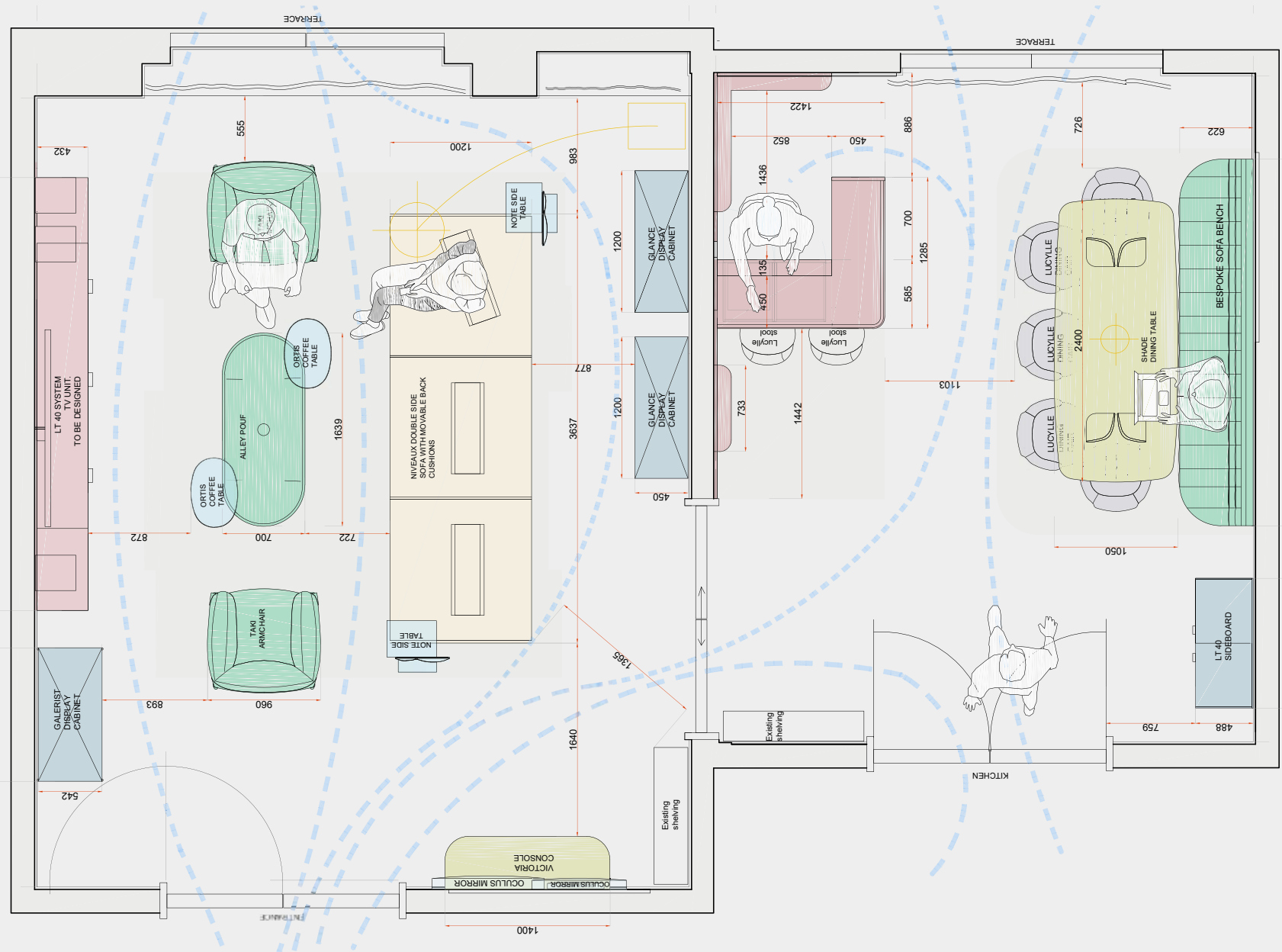


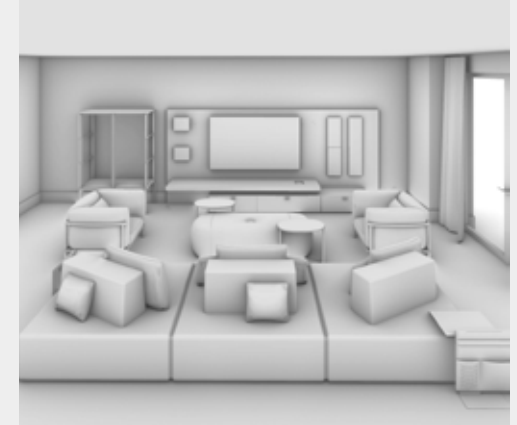
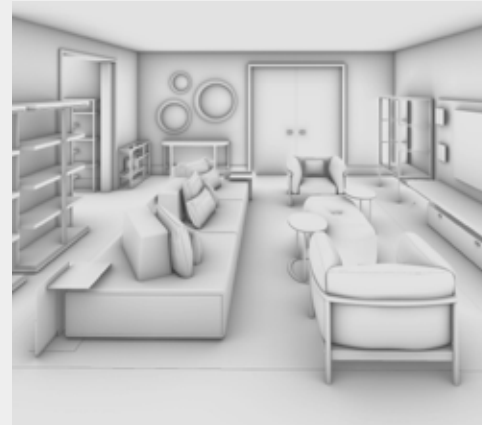
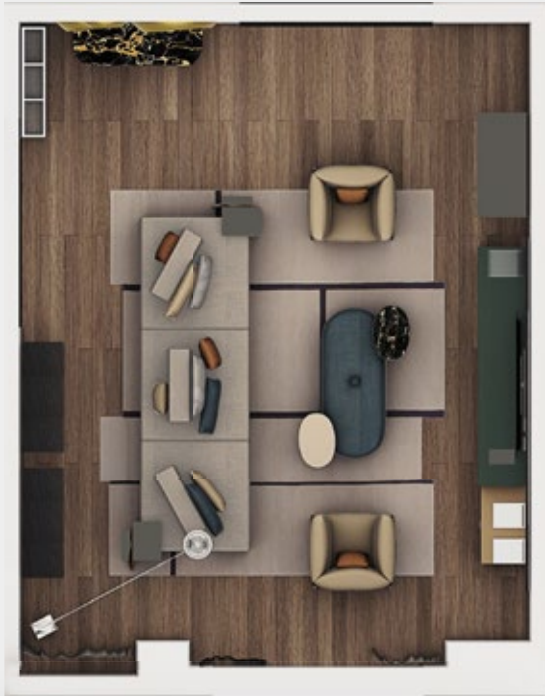
## MAP LEGEND

-  SOFA
-  ARMCHAIRS, POUF, BENCHES.
-  SIDE / COFFEE TABLES.
-  DISPLAYS, HIGH CABINETS, SIDEBOARDS.
-  BAR
-  DINING TABLES, CONSOLE, DESKS.
-  RUGS
-  MIRRORS
-  DINING CHAIRS
-  TV UNIT
-  LIGHTING

Interior Design service. Space planning for Option 2.

[www.lemamobili.com](http://www.lemamobili.com)





Interior Design service, two options for the living room. (Option 2 - client's choice). Initially, I've placed the bar area behind the sofa that can be used from both sides. The idea was to create a living area plus a bar area in the same room. The clients have some children, so the idea was to enjoy the space, doing different things all together in the same room. However, the client preferred to have the bar area in the dining room as per the option on the next page.

[www.lemamobili.com](http://www.lemamobili.com)







Option 2 -  
dining room with a bespoke  
bar, bespoke bench, boiserie  
back panels with shelving,

and LED lights. This was the  
client's choice.

[www.lemamobili.com](http://www.lemamobili.com)



On this page, you'll find a custom TV unit designed for a client, complete with a touch switch. Additionally, there are two concealed compartments and an access panel for cable management.

[www.lemamobili.com](http://www.lemamobili.com)

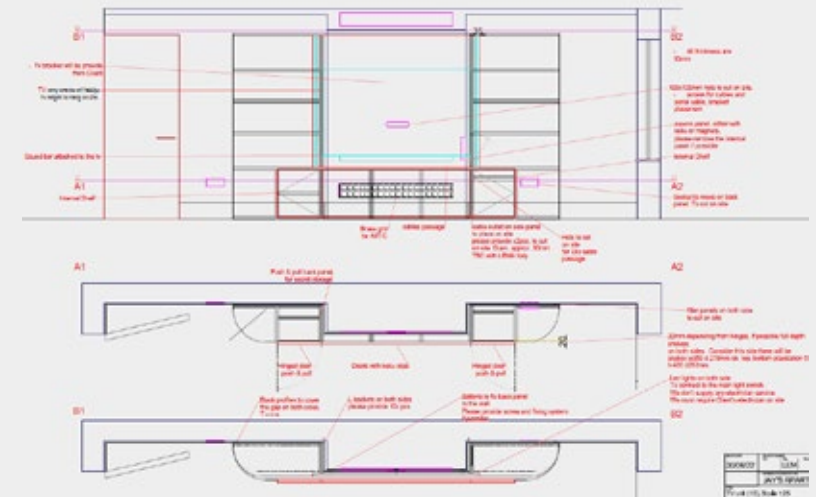






On this page, you'll find a custom TV unit designed for a client, complete with a touch switch. Additionally, there are two concealed compartments and an access panel for cable management.

[www.lemamobili.com](http://www.lemamobili.com)





OPTION 1  
COFFEE MAKER BOX

For Maxim World, I have designed and developed bespoke products for hotels and restaurants in the hospitality and contract industry. This includes room, bathroom, and spa sets, buffet presentations, coffee and tea presentations, conference sets, amenity service products, and more. The finishing and style requested by hotel or restaurant clients serve as inspiration for selecting materials, style, and finishes for the designs.

[maximworld.com](http://maximworld.com)

Black metal, brushed metal, light cream faux leather and clear acrylic

- A. Cloche
- B. Tray
- C. Sugar presentation
- D. Creamer
- E. Egg holder
- F. Petit four

Salt & pepper shaker



Egg holder



Sugar presentation



Petit four



OPTION 2  
IN ROOM DINING

Size: L 600mm x W 400mm



OPTION 3  
FOLDABLE TRAY WITH CLOCHE



Bamboo wood  
L 21.6" x W 13.7" x H 13.7"



OPTION 4  
SHARING DISH



A. Distressed oak wood and antique copper  
B. Light wood, hammered antique copper and hammered metal







Light cream and light blue faux leather, natural oak wood and brushed metal

- A. Magazine rack
- B. Ice bucket
- C. Waste bin
- D. Tissue box
- E. Notepad holder
- F. Tray



- A. Waste bin
- B. Tissue box
- C. Cotton container
- D. Soap dish
- E. Amenity tray

MORE STONE FINISHES AVAILABLE



Brown



Cream



Black

SUSTAINABLE SOURCE STONE AND NATURAL RATTAN



OPTION 1  
BATHROOM SET



Polished brass and black metal leather

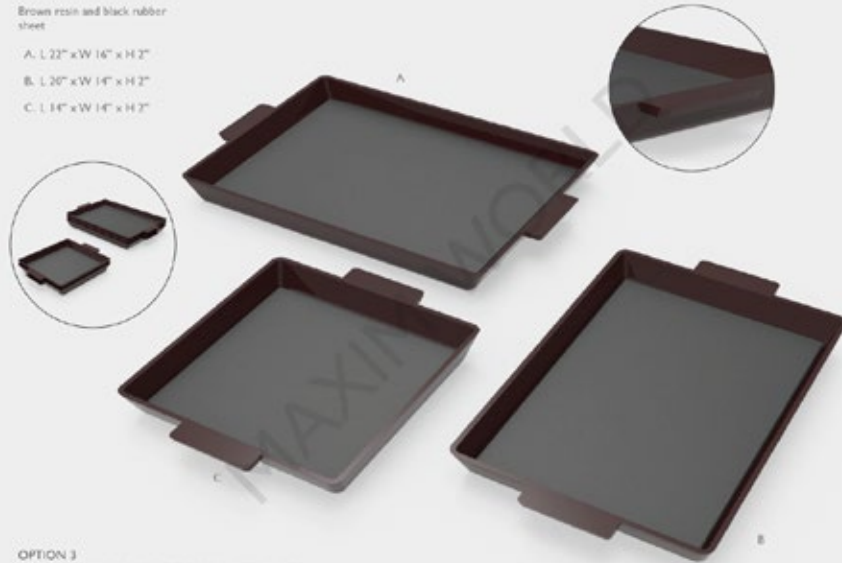
- A. Bottle holder
- B. Bread basket
- C. Condiment holder
- D. Tealights
- E. Napkins ring



OPTION 10  
TABLE TOP

Brown resin and black rubber sheet

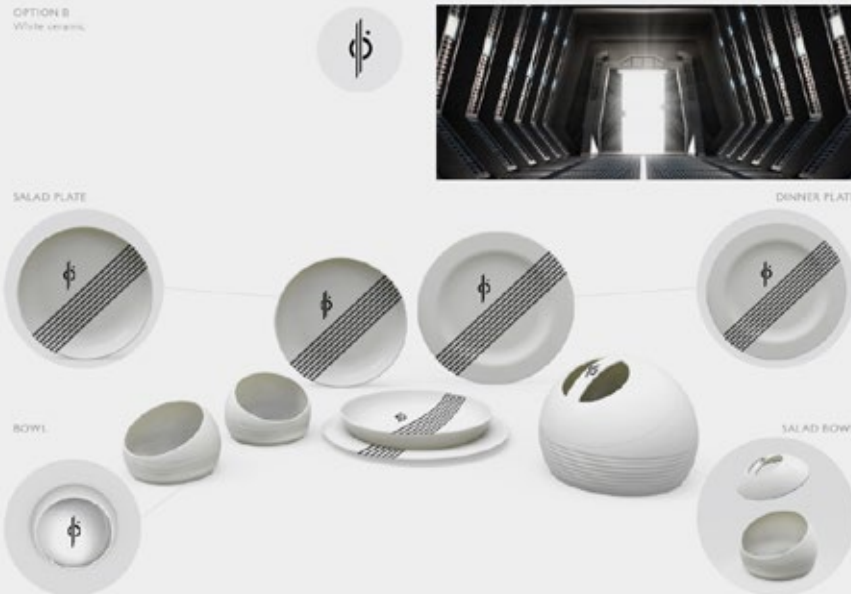
- A. L 22" x W 16" x H 2"
- B. L 20" x W 14" x H 2"
- C. L 14" x W 14" x H 2"



OPTION 3  
IN ROOM DINING TRAY

## MERCH PLATE SET

OPTION 2  
White ceramic



LOUNGE

## SNACK DISH

OPTION 3

- A. Antique metal and black ash wood
- B. Polished copper and distressed faux leather
- C. Polished and hammered brass with yellow clear acrylic, teak wood







OLTREFRONTIERA PROGETTI specializes in the design and production of window displays and store interiors. Project management services, from 2D/3D design to prototyping, quotations, production, and the delivery of window display items and retail stores for fashion brands and more.

[www.oltrefrontieraprogetti.it/en/](http://www.oltrefrontieraprogetti.it/en/)







DESIGN  
OF LOVE



I've developed and designed some products for the Design of Love collection, designed by Moro and Pigatti. These projects draw inspiration from the baroque era with complex shapes reminiscent of the past. They are crafted from recycled plastic PE and come in a wide array of colours. On this page, you can find 'Lady of Love' (a table lamp) and 'Madame of Love'.

<http://slidedesign.it/en/prodotti/topic/collezioni/design-of-love/>





Design of Love collection, designed by Moro and Pigatti, draws inspiration from the baroque era, featuring projects with intricate shapes reminiscent of the past. These pieces are crafted in plastic and are available in a wide array of colours. On this page and the previous one, you can also explore the 3D printing models, particularly for Lady of Love, as well as the 3D models and renderings.



SLIDE srl, 2014-2015

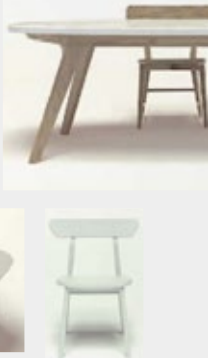
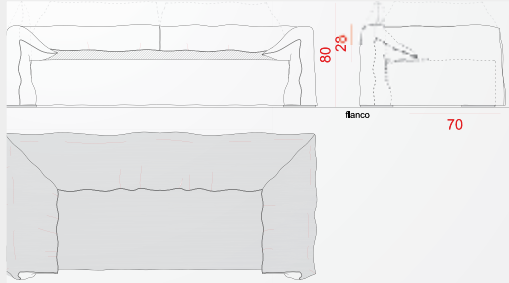
SLIDE®

SLIDE srl manufactures indoor and outdoor products using polyethylene and polyurethane, using rotational and injection moulding technology. The company collaborates with designers such as Marc Sadler, Karim Rashid, Paola Navone, Roberto Paoli, and many others.

<http://slidedesign.it/en/>







**Crate&Barrel**



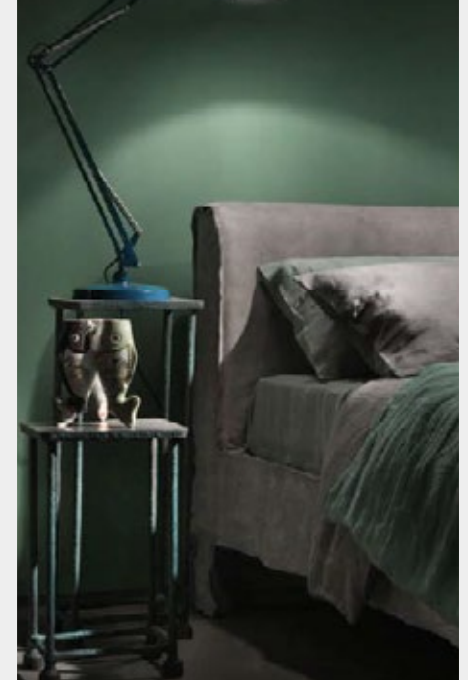
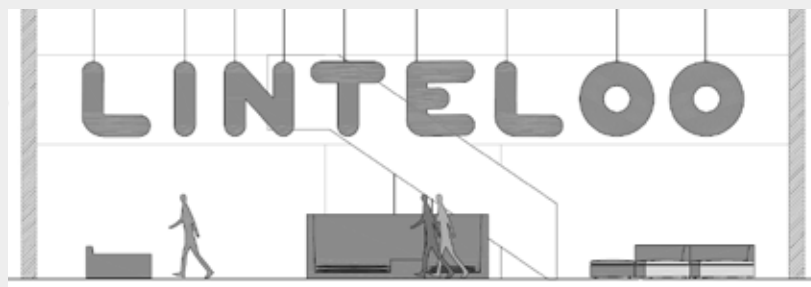
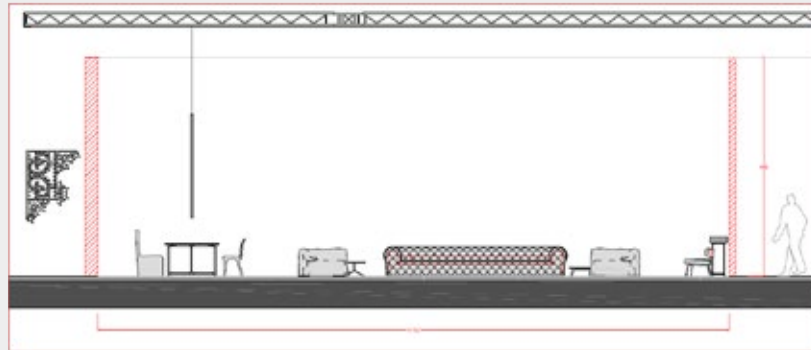
On this page, you'll find some examples of furniture and product development for Paola Navone and her design companies with whom she collaborated at that time.

[www.baxter.it/en](http://www.baxter.it/en)  
[www.crateandbarrel.com](http://www.crateandbarrel.com)  
[www.gervasoni1882.it](http://www.gervasoni1882.it)

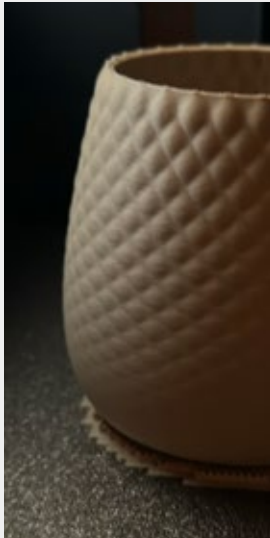
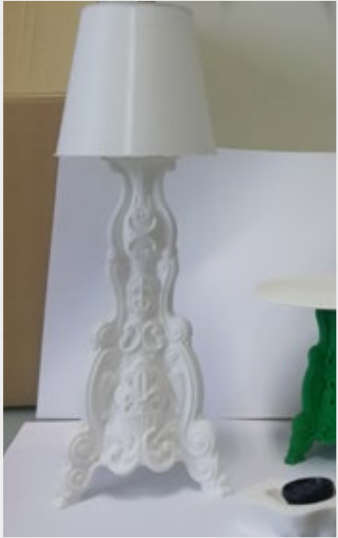
ercol











Some prototypes made by myself for clients and own projects: 3D printing, thermoforming, woodworking, and so on.



**Fuji armchair****Teddy armchair****Macky armchair**

I am passionate about using AI in design to create unique works, not just replicate art. Like using Pinterest for inspiration, I draw from various sources to craft new ideas. Your knowledge become your tool and what it makes AI image, beautiful. Actively experimenting with AI tools like Midjourney and Stable Diffusion, I focus on clear concepts rather than randomness.

The Fuji armchair for example is inspired by Japanese landscapes and traditional woodworking. The Macky armchair draws inspiration from Mackintosh's geometric forms.

**Wooden sofa****Centipede bench**



**Urban Japanese Sofa**

The Urban Japanese sofa draws inspiration from both brutalism architecture and Japanese patterns.

The African-inspired console features an essential shape with playful African patterns blended into the wood surfaces.

The dressing table is designed as a feminine desk, with a focus on essential, streamlined shapes.



**African-inspired Console**



**Dressing table**



**Australian-inspired Console**





**Terrarium coffee table**



**Living room**



**Reuse of telephone boxes in London**

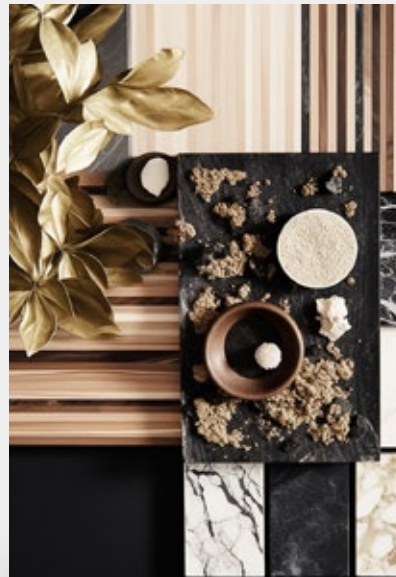
The Terrarium coffee table features a liftable lid for easy terrarium care. Its glass construction makes it both a decorative and functional piece, allowing a clear view of the terrarium inside.

Concept for Pride Month: Reuse of telephone boxes.

AI is also a helpful tool for creating preliminary moodboards.



**Moodboard**



**Moodboard**



**Living room**



# Portfolio

Matteo Mugnai